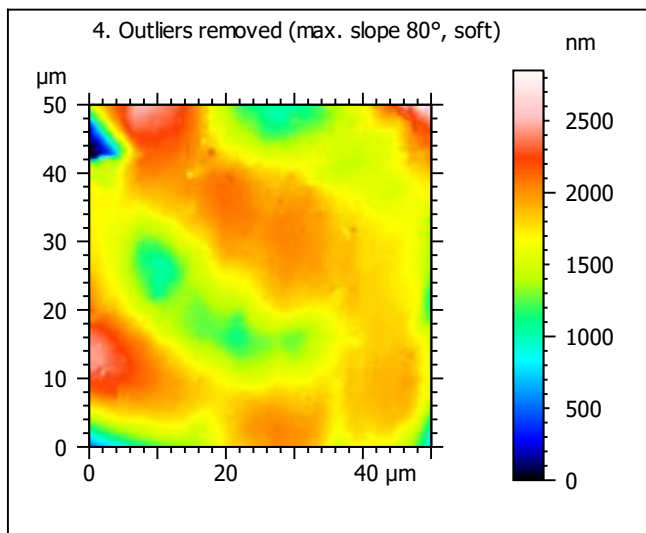
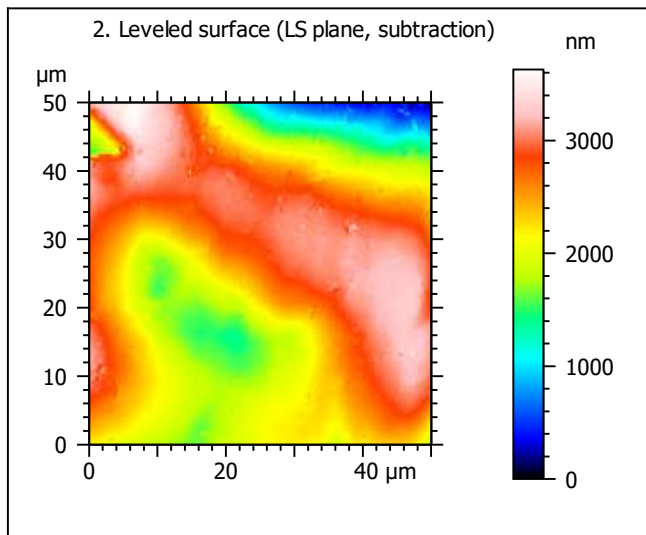
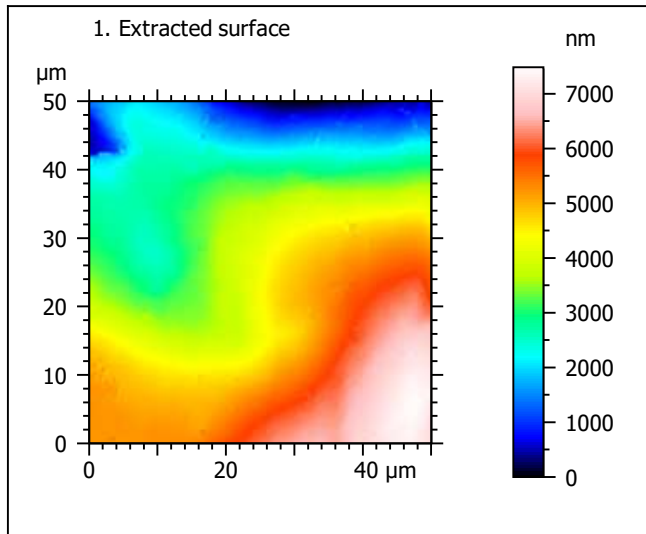
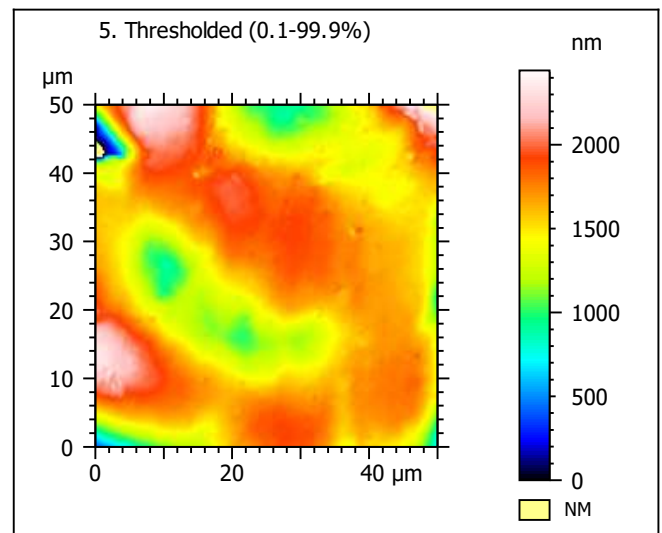
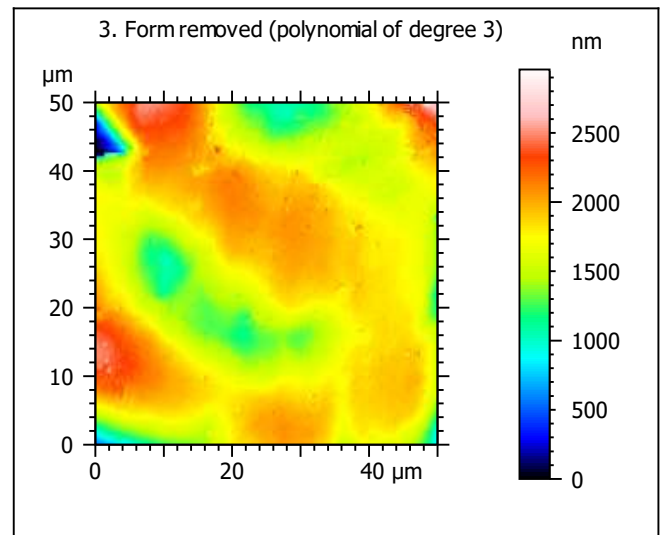


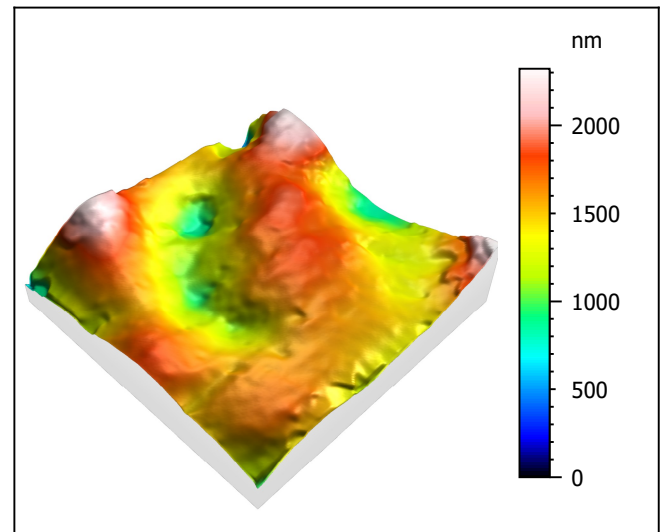
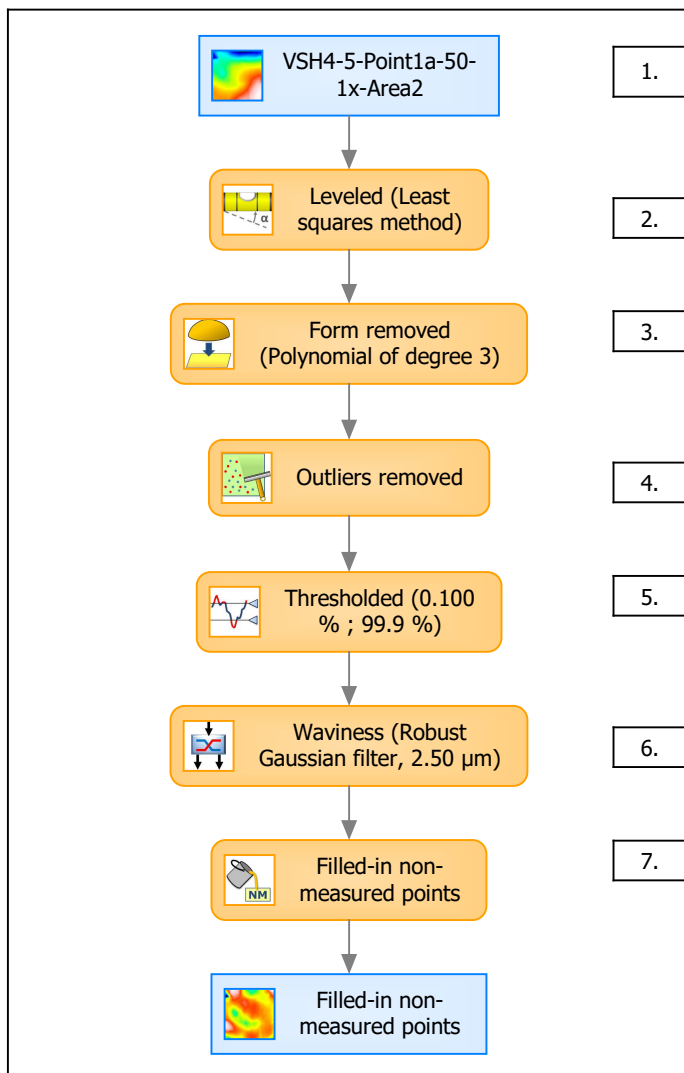
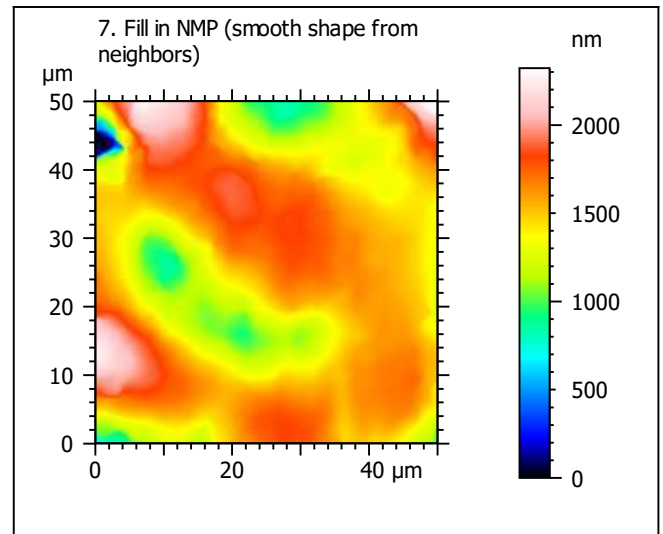
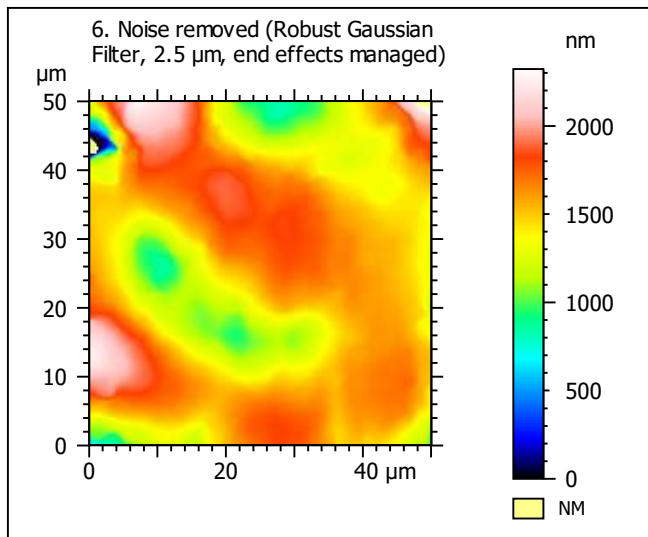
Template to process all extracted 50x50  $\mu\text{m}$  surfaces, acquired with the LEXT 4000 with the 50x/0.95 objective at 1x zoom

## A. Processing



Identity card			
Name:	VSH4-5-Point1a-50-1x-Area2		
File path:	D:\Data\Ant...\VSH4-5-Point1a-50-1x-Area2.sur		
Axis:	X		
Length:	50.0	μm	
Size:	201	points	
Spacing:	0.250	μm	
Axis:	Y		
Length:	50.0	μm	
Size:	201	points	
Spacing:	0.250	μm	
Axis:	Z		
Length:	7484	nm	
Size:	7200	digits	
Spacing:	1.04	nm	
NMP ratio:	0.00 % (0 Pts)		





Identity card			
Name:	VSH4-5-Point1a-50-1x-Area2 > Levelled (Leas...		
Axis:	X		
Length:	50.0	μm	
Size:	201	points	
Spacing:	0.250	μm	
Axis:	Y		
Length:	50.0	μm	
Size:	201	points	
Spacing:	0.250	μm	
Axis:	Z		
Length:	2322	nm	
Size:	2234	digits	
Spacing:	1.04	nm	
NMP ratio:	0.00 % (0 Pts)		

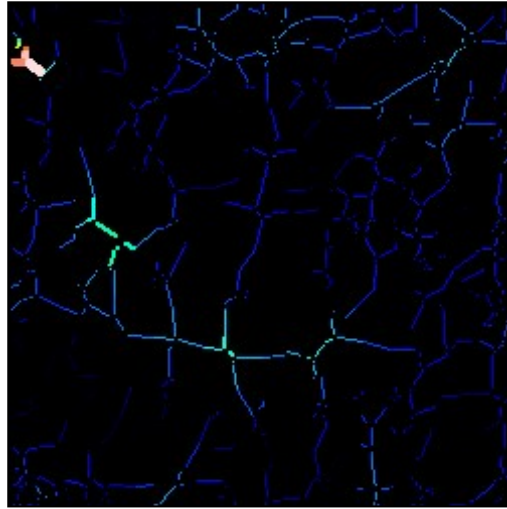
**Analyses:**  
**8. ISO 25178**  
**9. Furrow**  
**10. Texture isotropy and direction**  
**11. SSFA**

## B. Analyses

### 8. ISO 25178-2 parameters on surface #7

ISO 25178		
Height Parameters		
Sq	281	nm
Ssk	-0.54	
Sku	5.00	
Sp	807	nm
Sv	1516	nm
Sz	2322	nm
Sa	215	nm
Functional Parameters		
Smr	77.7	%
Smc	309	nm
Sxp	594	nm
Spatial Parameters		
Sal	4.96	$\mu\text{m}$
Str	0.261	
Std	93.8	$^{\circ}$
Hybrid Parameters		
Sdq	0.106	
Sdr	0.513	%
Functional Parameters (Volume)		
Vm	0.0154	$\mu\text{m}^3/\mu\text{m}^2$
Vv	0.325	$\mu\text{m}^3/\mu\text{m}^2$
Vmp	0.0154	$\mu\text{m}^3/\mu\text{m}^2$
Vmc	0.237	$\mu\text{m}^3/\mu\text{m}^2$
Vvc	0.287	$\mu\text{m}^3/\mu\text{m}^2$
Vvv	0.038	$\mu\text{m}^3/\mu\text{m}^2$

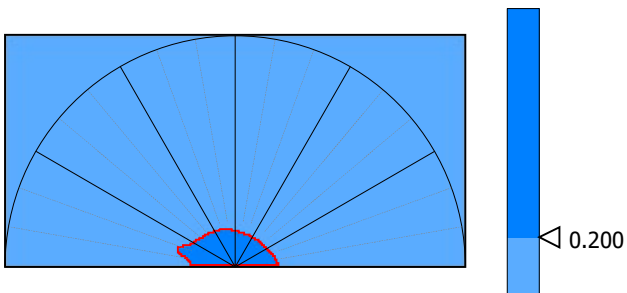
### 9. Furrow analysis surface #7



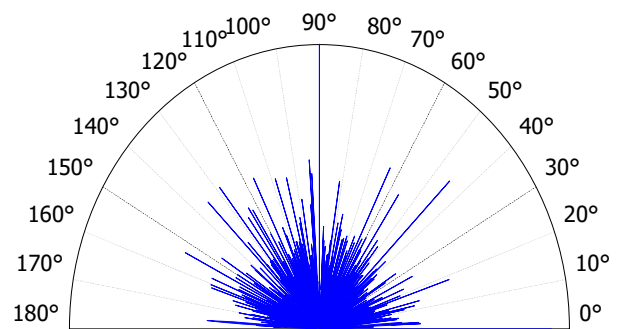
All furrows are shown.

Parameters	Value	Unit
Maximum depth of furrows	924	nm
Mean depth of furrows	112	nm
Mean density of furrows	2285	cm/cm2

### 10. Texture isotropy and direction on surface #7



Parameters	Value	Unit
Isotropy	52.6	%
Periodicity	*****	%
Period	*****	$\mu\text{m}$
Direction of period	*****	$^{\circ}$



Parameters	Value	Unit
Isotropy	26.1	%
First Direction	90.0	$^{\circ}$
Second Direction	0.266	$^{\circ}$
Third Direction	45.0	$^{\circ}$

